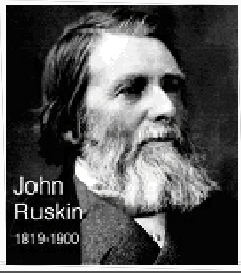


Our Surveying Philosophy - Accurate - complete - concise - correct first time.



*"It's unwise to pay too much, but it's unwise to pay too little too.  
When you pay too much, you lose a little money.....that is all.  
When you pay too little, you sometimes lose everything because the thing  
you bought was incapable of doing the thing it was bought to do.*

*The Common Law of business balance prohibits paying a little and getting  
a lot...it can't be done.  
If you deal with the lowest bidder, it is well to add something for the risk you run, and  
if you do that, you will have enough to pay for something better."*

John Ruskin 1819~1900



Leica TCR1105 - National Trust  
Laser Total Station in 1999

# Russell Geomatics Ltd

## 3D Laser Scanning Services

### Land & Measured Building Surveyors

Unit 6, Pool Bank Business Park  
High Street, Tarvin, Chester  
Cheshire, CH3 8JH

Email: [mail@russellgeomatics.co.uk](mailto:mail@russellgeomatics.co.uk)

Tel: 01829 749093  
Mob: 07802 541987

## Surveying and recording since 1987:

We have since been providing our various surveying services to clients such as The National Trust, The Church of England, Cammel Laird, Carillion, Sir Alfred McAlpine, Redrow, Miller, Gleeson and Persimmon. Our staff have wide and varied past experience and are able to draw on professional knowledge gained working for Consulting Engineers, Architects, Surveyors and Construction companies prior to joining our company.

We take great pride in our work and always produce detailed, accurate, concise drawings which form a definitive record. To this end we match dedicated surveyors to the best available surveying hardware and software. Our business is all about 'getting it right' and not just about making a profit at the exclusion of all else.

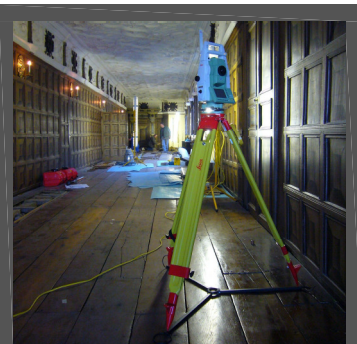
Our laser scans & measured surveys are always tailored to suit the specific needs of each project and provide our Clients with high quality useable spatial data which gives all the answers...first time!



Leica TCRA1103 - National Trust  
Laser Total Station in 2002



Leica Cyrax 2500 - Victoria Baths  
Laser scanning in 2003 BBC2 TV



Leica TCRP1201 - National Trust  
Laser measurement in 2006



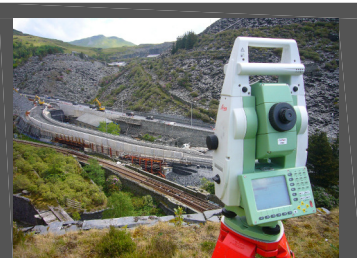
FARO Photon 120 - National Trust  
Laser scanning in 2009



Leica HDS - Hereford Cathedral  
Laser scanning in 2008



Leica HDS 3000 - National Trust  
Laser scanning in 2005



Leica TCRP1201 - Carillion  
Laser monitoring in 2007



# 3D Laser Scanning Services:

- FARO Focus X330 laser scanners - capture 975,000 3D points per second up to 120m range. Fastest scanner on the UK market.
- 360 deg 'whole room scans' and 41 million points in less than 3 minutes.
- 10 Megapixel resolution colour photo mapping onto point cloud data for photorealistic true size scalable 3D colour scans.
- Production of visualisations, scalable ortho images, flythrough movies.
- Software: FARO Scene 5.4.4 / Cyclone MODEL / Pointools EDIT / Pointools for RHINO / Pointools for AutoCAD / Cyclone Cloudworx PRO.
- AutoCAD 2D/3D and many other formats for final output to Clients.
- Perfect for non contact surveys where access is difficult & time is limited.
- Laser scanning experience since 2003 with our own equipment.
- Scanner Hire & software training. Contract scanning & registration services.



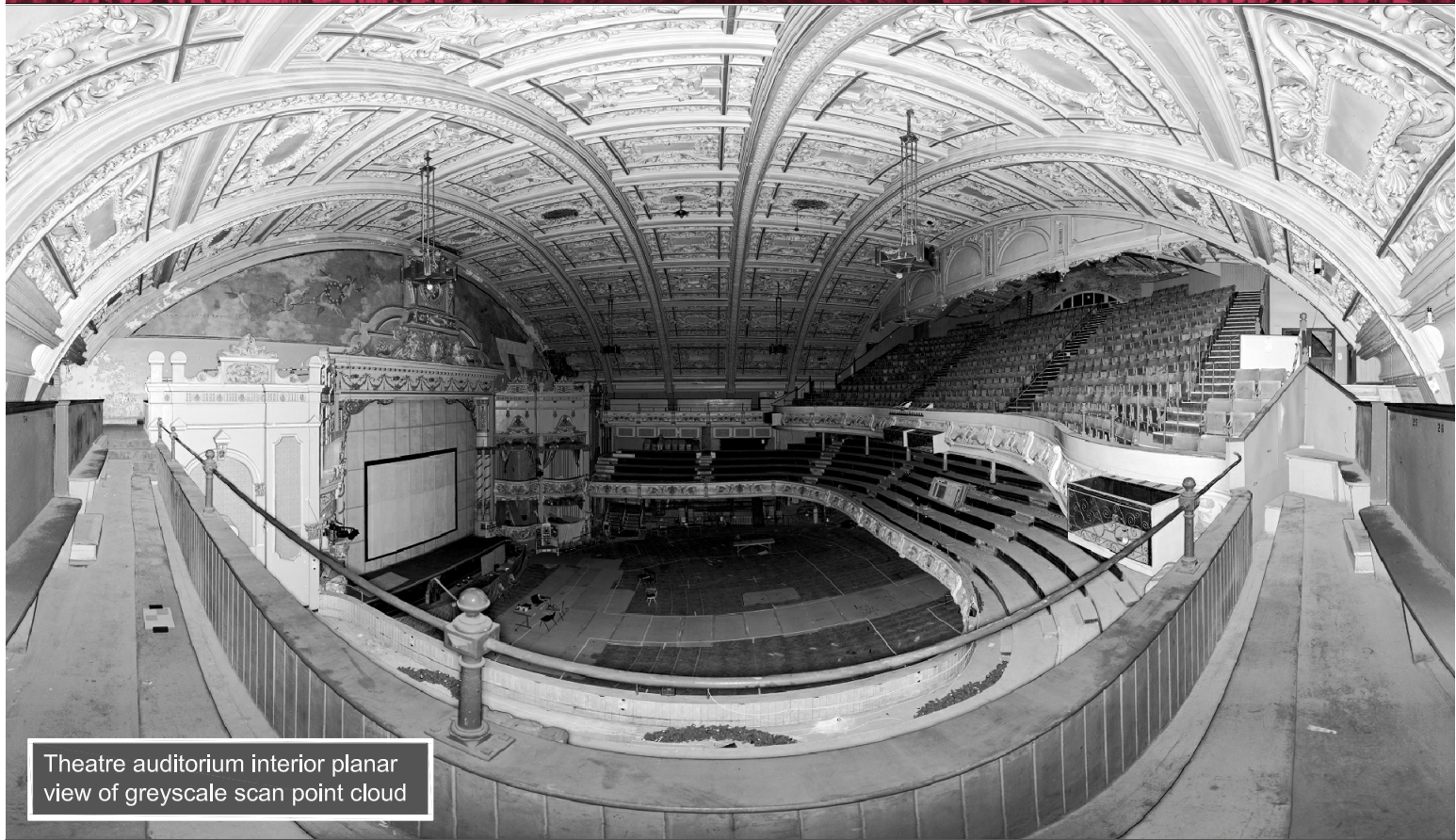
FARO Focus X330 laser scanner

## Russell Geomatics Ltd 3D Laser Scanning Services Land & Measured Building Surveyors

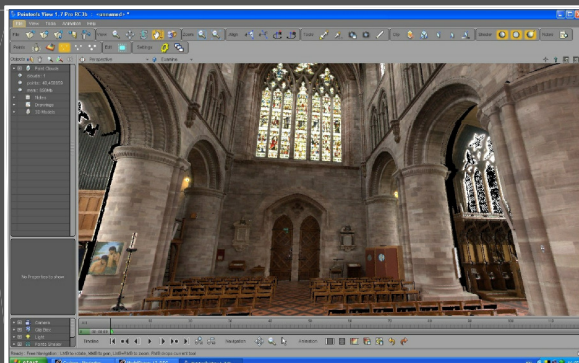
Unit 6, Pool Bank Business Park  
High Street, Tarvin, Chester  
Cheshire, CH3 8JH

Email: [mail@russellgeomatics.co.uk](mailto:mail@russellgeomatics.co.uk)

Tel: 01829 749093  
Mob: 07802 541987



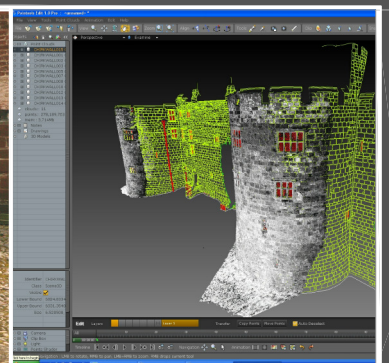
Theatre auditorium interior planar view of greyscale scan point cloud



Hereford Cathedral - colour scan



Our scan team travelling light!



Scan & 3D CAD model hybrid



# Ecclesiastical Buildings:

**Cathedrals and Churches** have become a specialty over the years and we have refined our approach and techniques to give a sensitive non-contact measurement service to ecclesiastical projects.

Cathedral Architects and Listed Building Consultants use our services regularly when accurate drawings are needed.

We have been known to work right through the night time hours in order to ensure uninterrupted eye-safe 3D laser scans of Cathedral interiors.

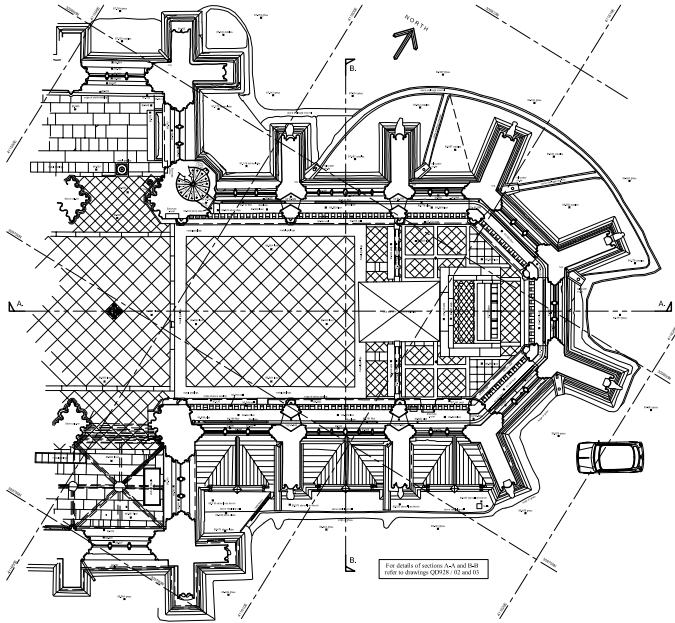


## Russell Geomatics Ltd 3D Laser Scanning Services Land & Measured Building Surveyors

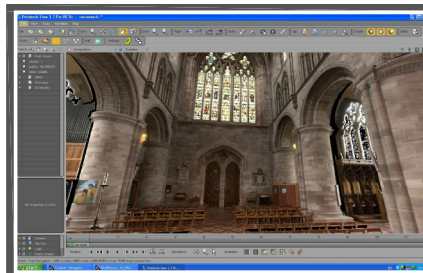
Unit 6, Pool Bank Business Park  
High Street, Tarvin, Chester  
Cheshire, CH3 8JH

Email: [mail@russellgeomatics.co.uk](mailto:mail@russellgeomatics.co.uk)

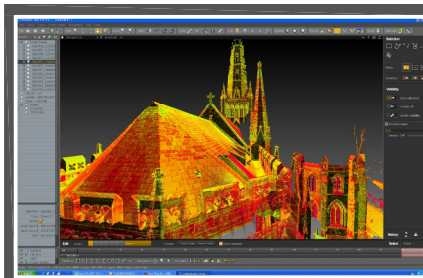
Tel: 01829 749093  
Mob: 07802 541987



Ground Floor Plan



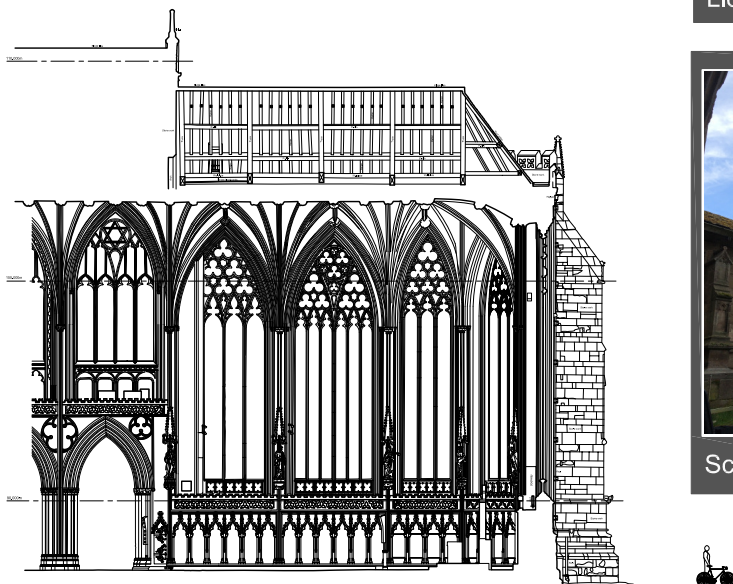
Hereford Cathedral - colour scan



Lichfield Cathedral - multi hue scan



Lichfield Cathedral  
Site recording begins



Longitudinal Section



Scan Mast recording



Cross Section



# Listed Buildings:

Listed & Historic Building measured surveys have been the core activity of our business for the last 22 years and we have been commissioned to record some of the most important and interesting buildings in the United Kingdom. We feel privileged to play a part in the long term care of the country's fine Architectural heritage.

Our association with **The Victoria Baths Trust** dates back to **2004** when winning the **BBC2 TV Restoration** series got the project started. Purchase of our surveying services was an early spend from funding raised.



"Get me closer to the detail"

## Russell Geomatics Ltd 3D Laser Scanning Services Land & Measured Building Surveyors

Unit 6, Pool Bank Business Park  
High Street, Tarvin, Chester  
Cheshire, CH3 8JH

Email: [mail@russellgeomatics.co.uk](mailto:mail@russellgeomatics.co.uk)

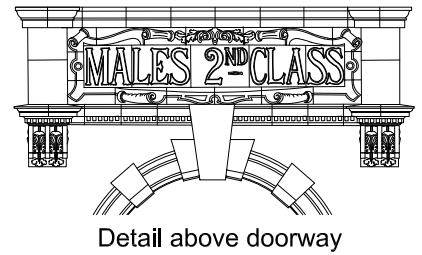
Tel: 01829 749093  
Mob: 07802 541987



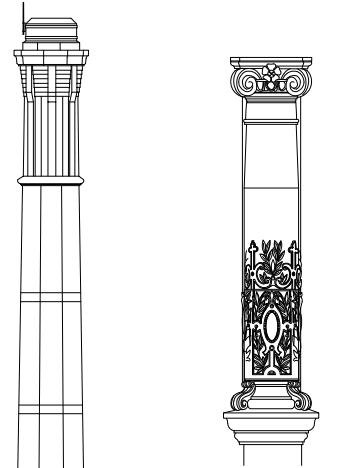
"Get me closer to the ground"  
Nothing defeats us on site - just another challenge!



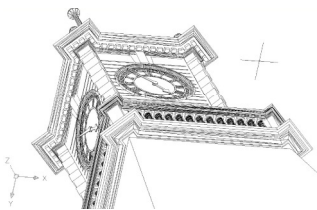
Rendered CAD model



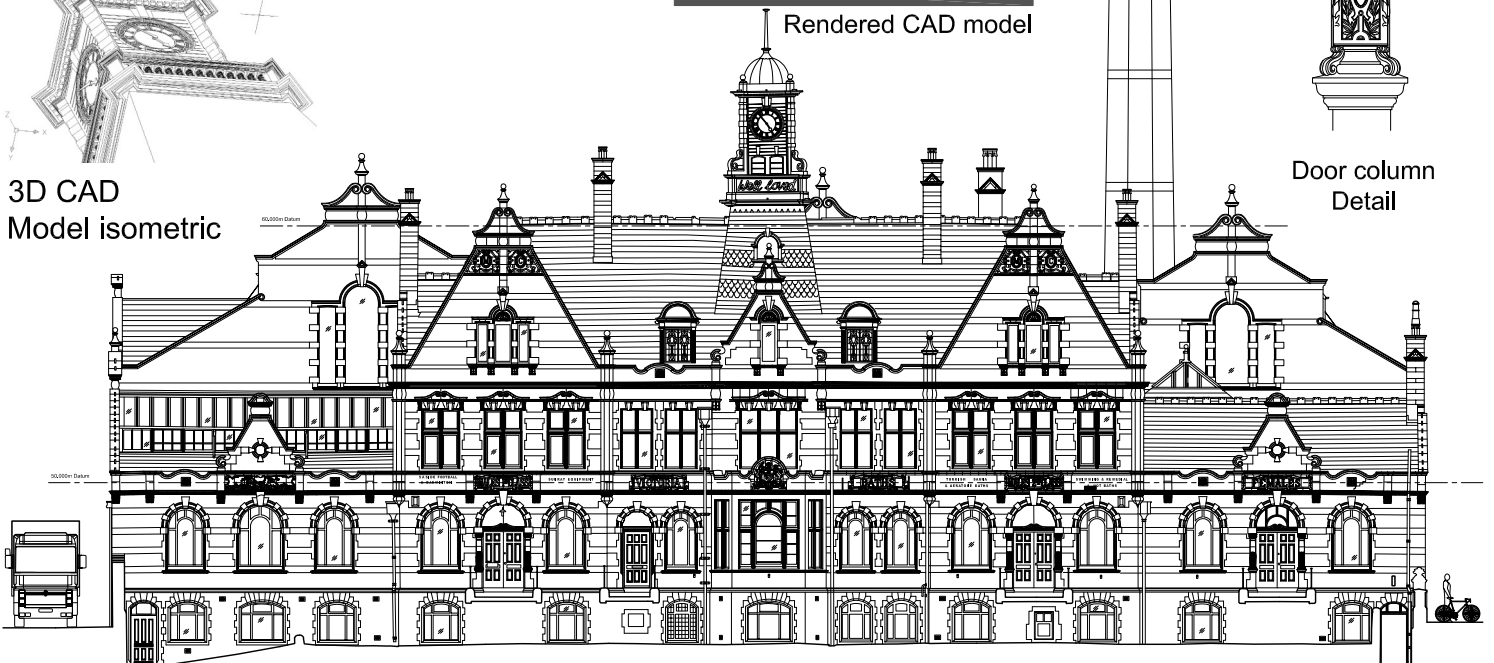
Detail above doorway



Door column  
Detail



3D CAD  
Model isometric

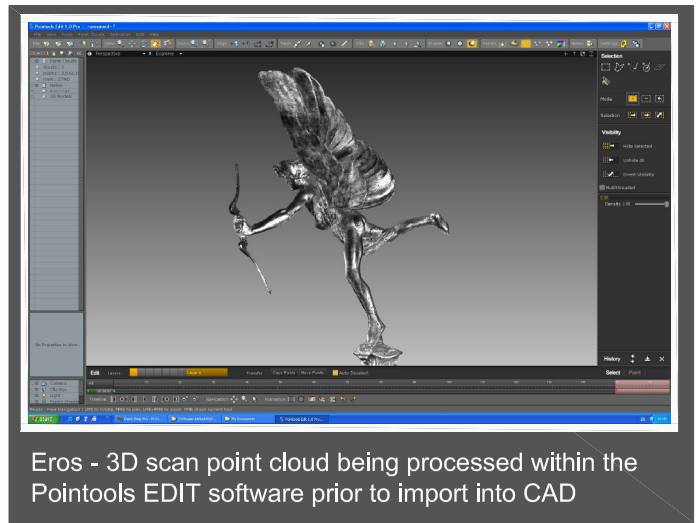


Victoria Baths - Front Elevation surveyed using a mix of laser scanning / photogrammetry / laser total stations



# Statuary & Monuments:

Always an interesting challenge for surveyors. We have laser scanned many public monuments such as Eros normally held aloft by the Shaftesbury memorial fountain in **Sefton Park**, but found in secure storage in the Liverpool Conservation Centre. Both statue and base were scanned at different locations and reunited in 3D CAD space. **Liverpool 2020** commissioned us to scan and record all of the listed pavilions and bridges in **Stanley Park** in preparation for the new LFC Football stadium.



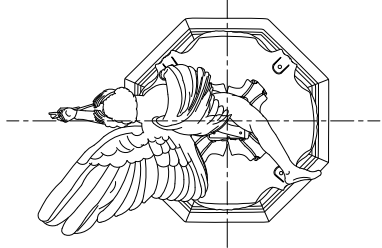
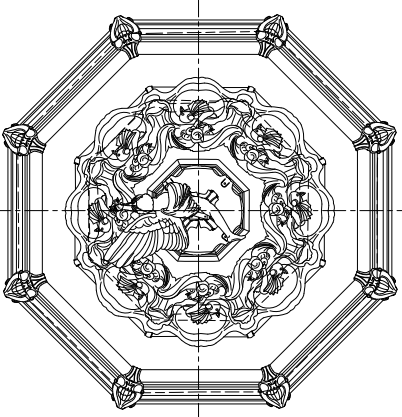
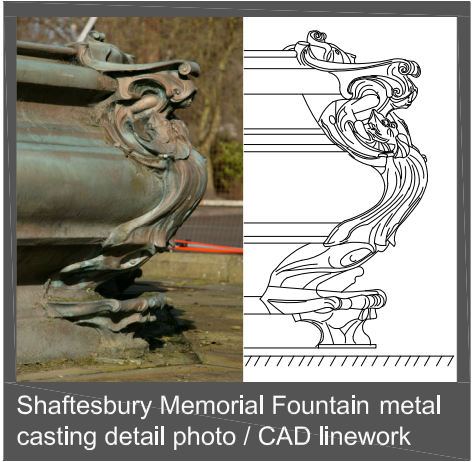
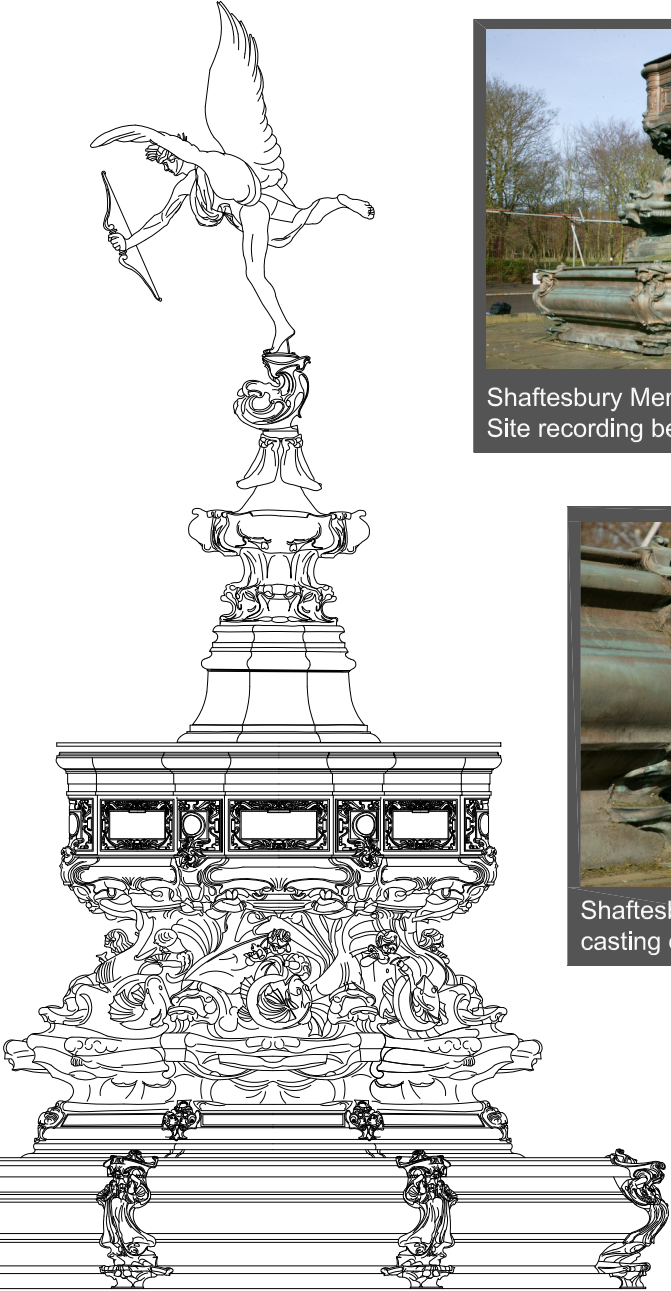
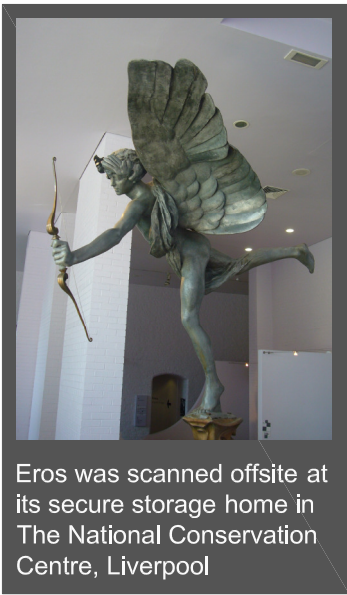
## Russell Geomatics Ltd

### 3D Laser Scanning Services Land & Measured Building Surveyors

Unit 6, Pool Bank Business Park  
High Street, Tarvin, Chester  
Cheshire, CH3 8JH

Email: [mail@russellgeomatics.co.uk](mailto:mail@russellgeomatics.co.uk)

Tel: 01829 749093  
Mob: 07802 541987



Eros was reunited with his base fountain in CAD space

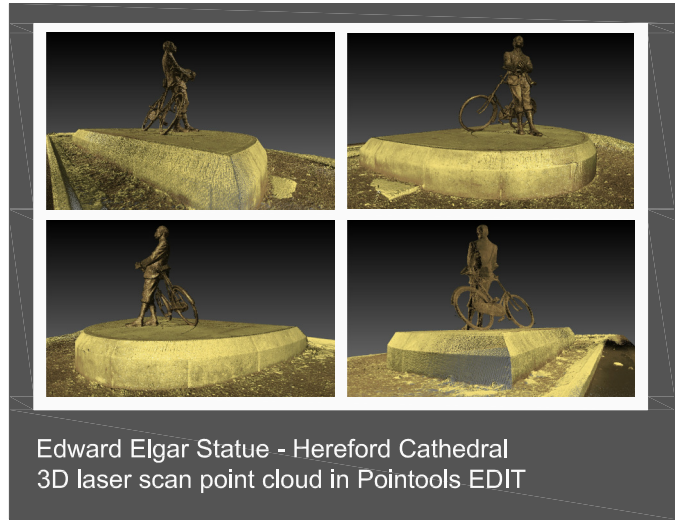


# Statuary & Monuments:

We have laser scanned many public monuments such as Edward Elgar and his bicycle. He stands proudly in the grounds of Hereford Cathedral.

**2020** Liverpool commissioned us to scan and record all of the listed pavilions and bridges in **Stanley Park** in preparation for the new LFC Football stadium.

Metropolitan Borough of Wirral needed a detailed measured survey record of the Roman Boathouse in Birkenhead Park.



Edward Elgar Statue - Hereford Cathedral  
3D laser scan point cloud in Pointools EDIT

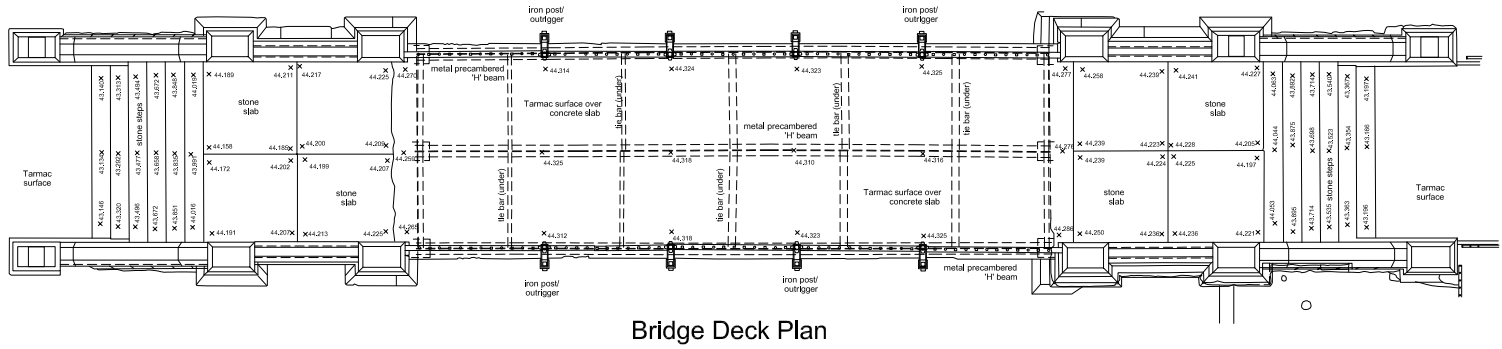
## Russell Geomatics Ltd

### 3D Laser Scanning Services Land & Measured Building Surveyors

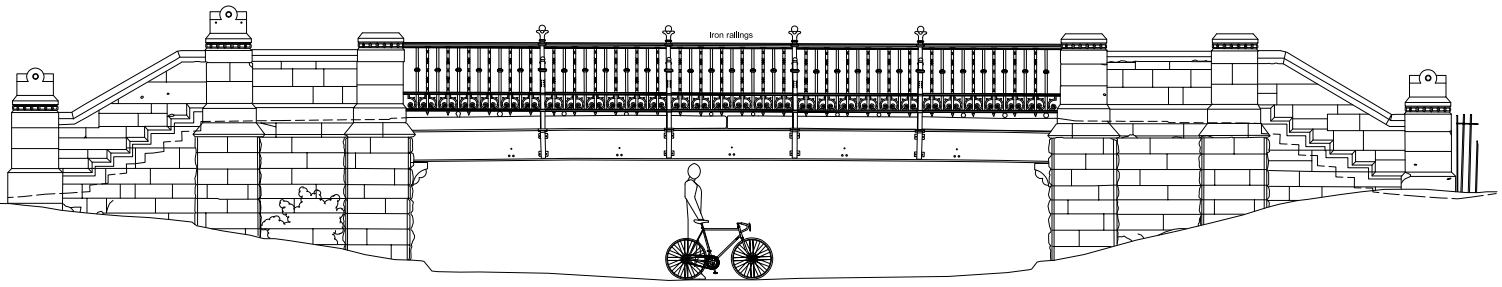
Unit 6, Pool Bank Business Park  
High Street, Tarvin, Chester  
Cheshire, CH3 8JH

Email: [mail@russellgeomatics.co.uk](mailto:mail@russellgeomatics.co.uk)

Tel: 01829 749093  
Mob: 07802 541987



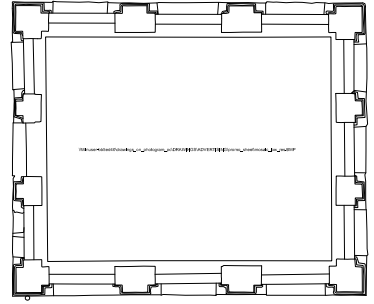
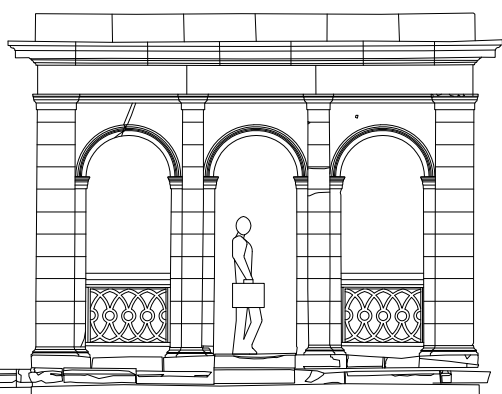
Bridge Deck Plan



Bridge Elevation



Photograph of mosaic floor in Roman Boathouse



Rectified photo of mosaic floor in Roman Boathouse



Roman Boathouse Elevation

water level 7.038m

water level 7.038m



# Topographical Surveys:

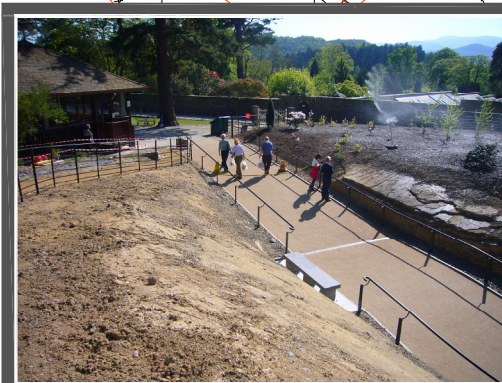
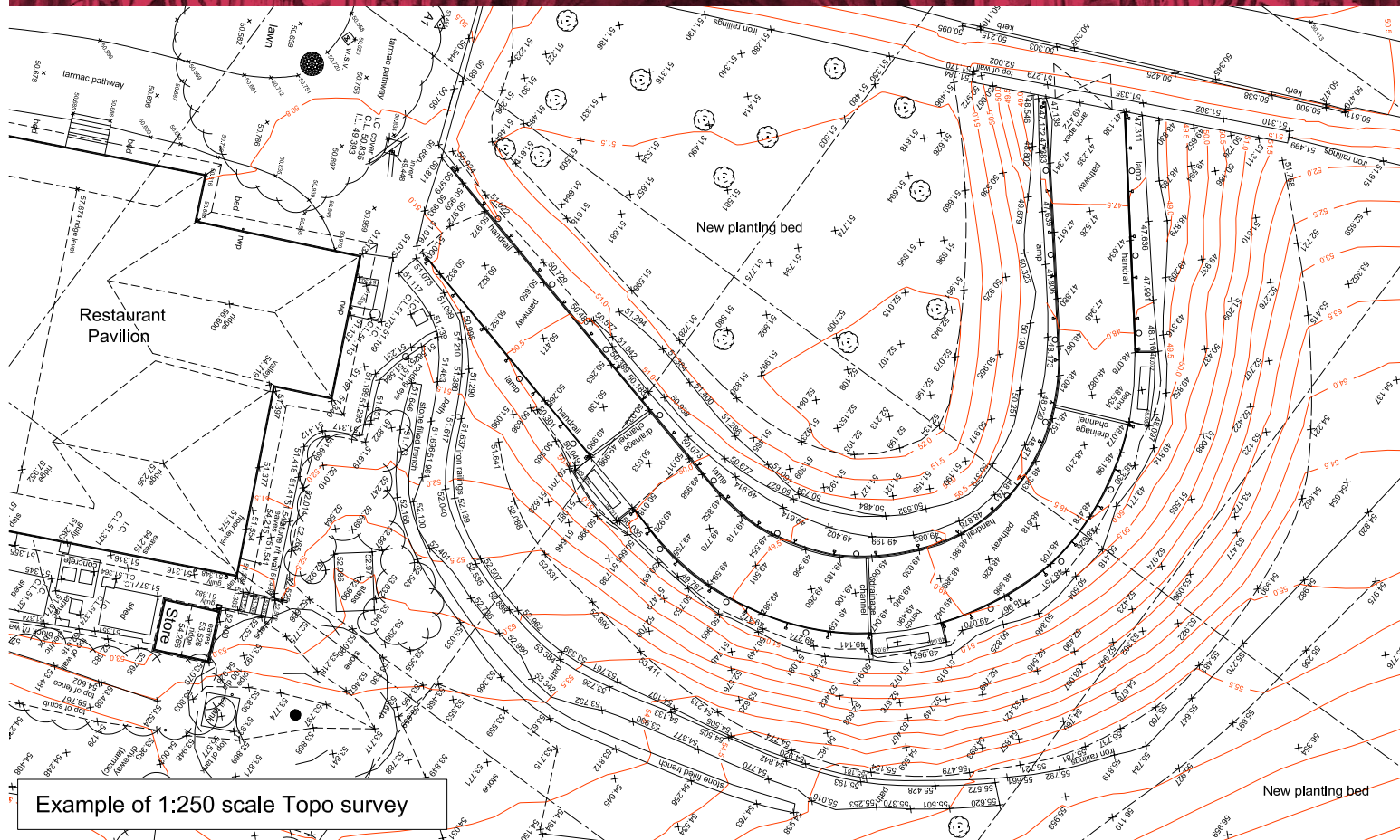
- High quality 2D / 3D height contoured plans produced by LISCAD / AutoCAD modeling software
- Always proper topo coverage - nothing omitted as we never try to cut corners with your projects
- Leica TCRP1201 total stations - simply the best survey hardware available regardless of cost
- Surveys that always extend past the site boundary as we consider off site services, buildings, road visibility splays and any other features which may have a 'planning influence'.
- 19 years without being asked to re-visit a site to pick up something we missed off or facing any type of claim against our £2 million Professional Indemnity insurance cover.

**Russell Geomatics Ltd**  
**3D Laser Scanning Services**  
**Land & Measured Building Surveyors**

Unit 6, Pool Bank Business Park  
High Street, Tarvin, Chester  
Cheshire, CH3 8JH

Email: [mail@russellgeomatics.co.uk](mailto:mail@russellgeomatics.co.uk)

Tel: 01829 749093  
Mob: 07802 541987





# FARO TYPE CHECKERBOARD TARGETS

Had enough of using paper targets? Damp & deformed? Lost in the wind? Not printed enough out?

Target Sets ready for use on site - Interior & exterior scanning (Add £15 for next day delivery)

Close range set: 50No. A5 size / 20No. A4 size - £350+VAT

Longer range set: 4No. A3 size / 4No. A2 size - £250+VAT

All targets pre-printed with target reference numbers for max compliance during registration

Call Andy on 01829 749093 / 07802 541987 for more info / to place an order.

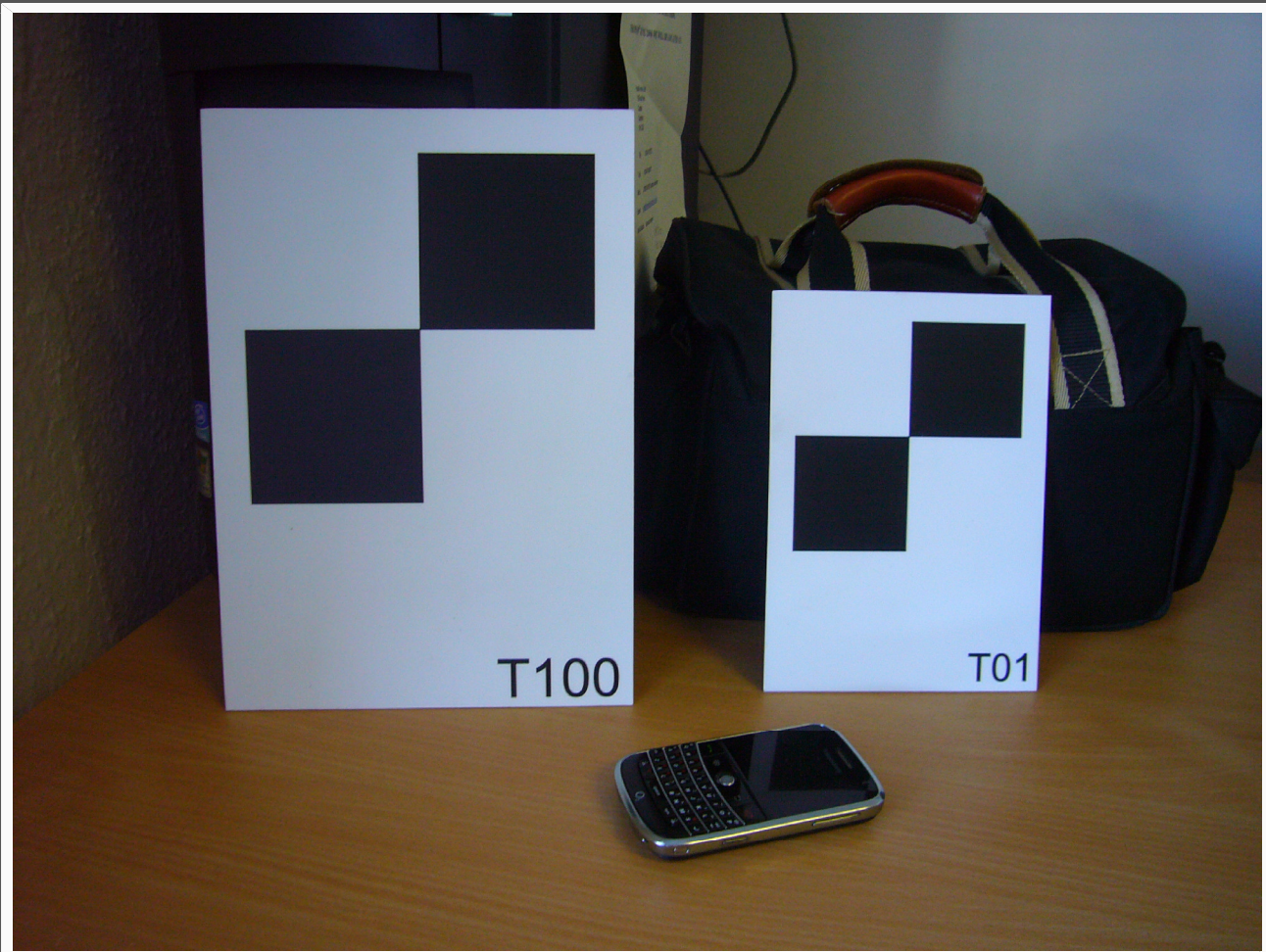
Russell Geomatics Ltd  
3D Laser Scanning Services  
Land & Measured Building Surveyors

Suite 1 / Unit 6, Pool Bank Business Park  
Tarvin, Chester, Cheshire, CH3 8JH

Email: [mail@russellgeomatics.co.uk](mailto:mail@russellgeomatics.co.uk)

Web: [www.russellgeomatics.co.uk](http://www.russellgeomatics.co.uk)

Tel: 01829 749093  
Mob: 07802 541987



## PHASE BASED 3D SCANNER - CHECKERBOARD TARGETS

STIFF | LIGHTWEIGHT | REUSEABLE | WEATHERPROOF | LIGHTFAST | DESIGNED FOR PURPOSE  
TESTED FOR MAX COMPLIANCE WITH FARO FOCUS 3Ds / X330 SCANNERS