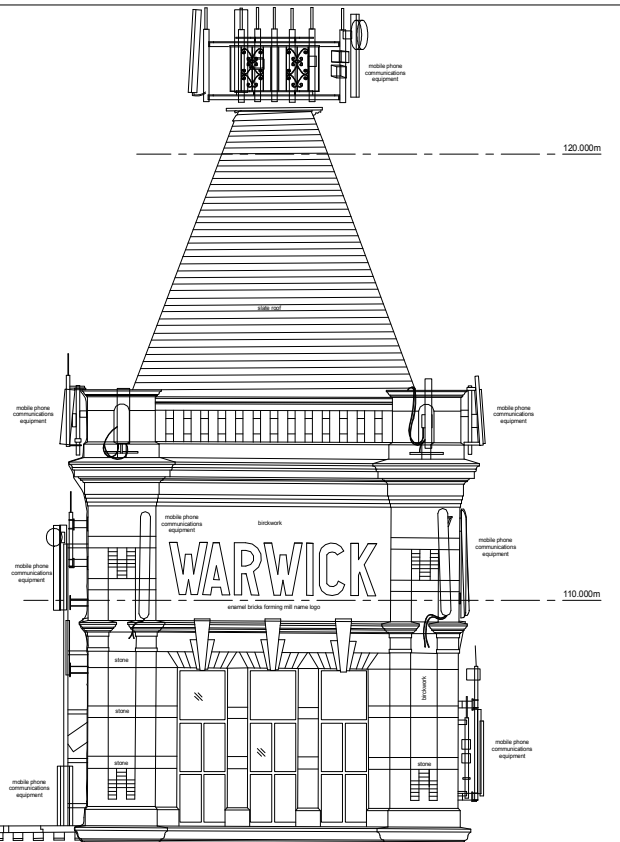
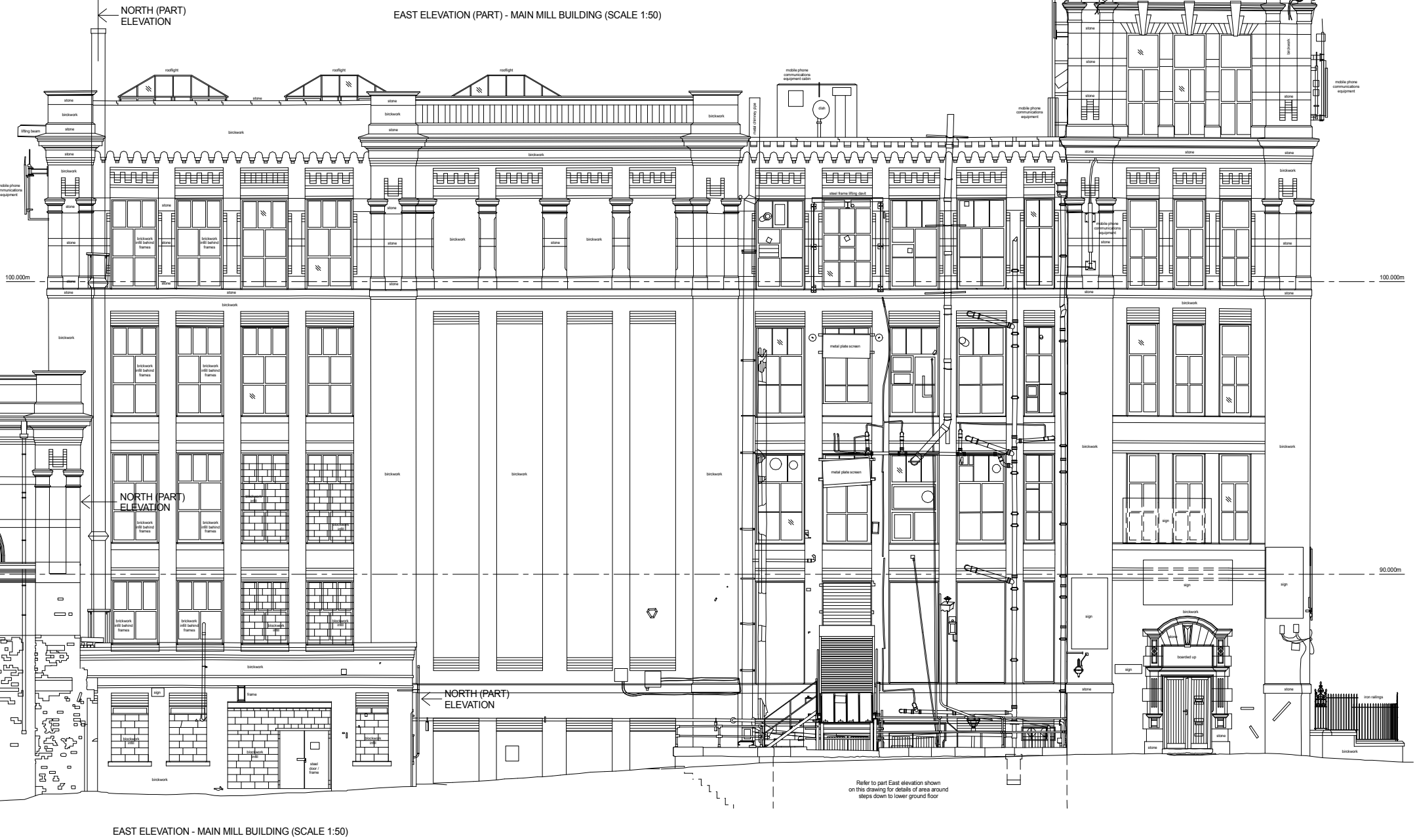
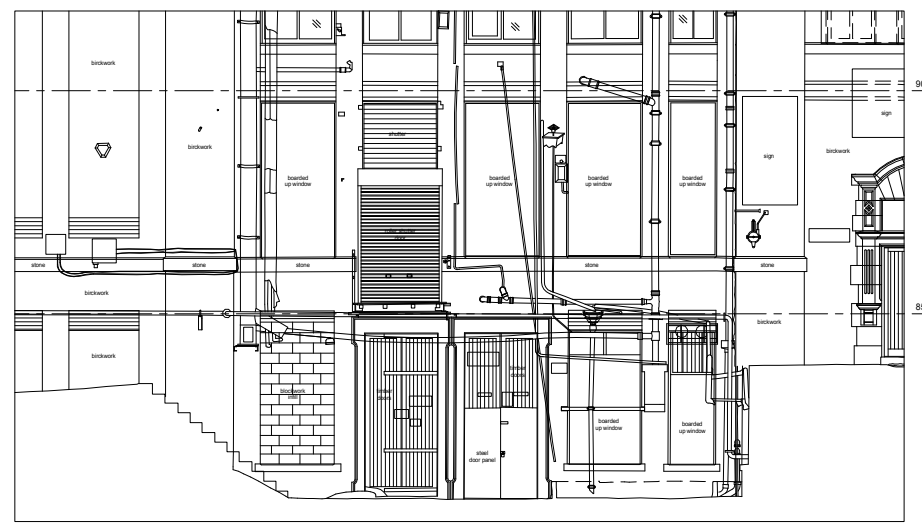
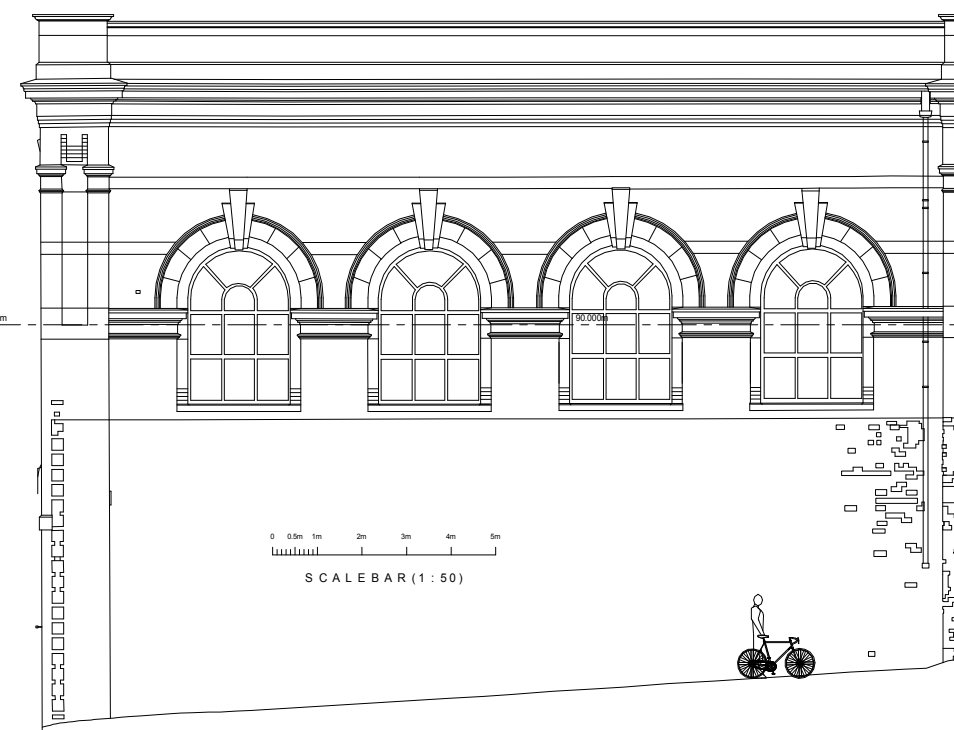
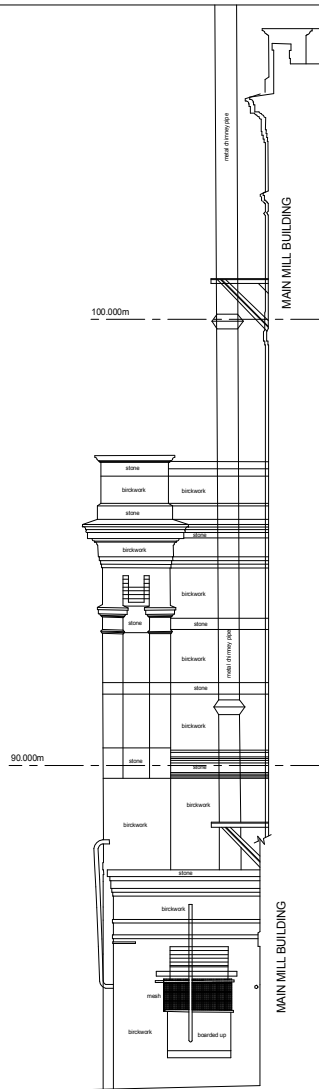
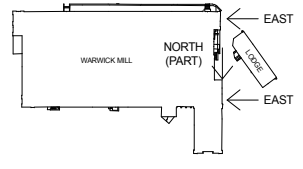


Drawn	Checked	Approved	Date	Phase	Final
Project	Scale				
	1:50				
Drawing No	at A0				

- Notes
1. Survey Grid origin & orientation are related to site survey drawing no. SDI 1271 produced by ourselves
 2. Location of any underground drainage shown is not proven by dye test or other means
 3. Route of any buried sections of water supply was not proven at time of survey
 4. Levels are related to OSBM situated on Police station in Value = 79.90m
 5. w - window opening
d - door opening
C - ceiling level
Cg - ceiling level
H - head height level of door / window
r - window / door recess bricked up
L.C. - drainage inspection chamber
G - drainage gully
r.e. - rodding eye
U.T.L. - unable to lift (drain cover)
d.k. - drop kerb
rwp - rain water pipe
rwc - rain water channel
wsv - water stop valve
B - Bollard
EP - electricity / B.T. post



Refer to part East elevation shown on this drawing for details of area around steps down to lower ground floor